



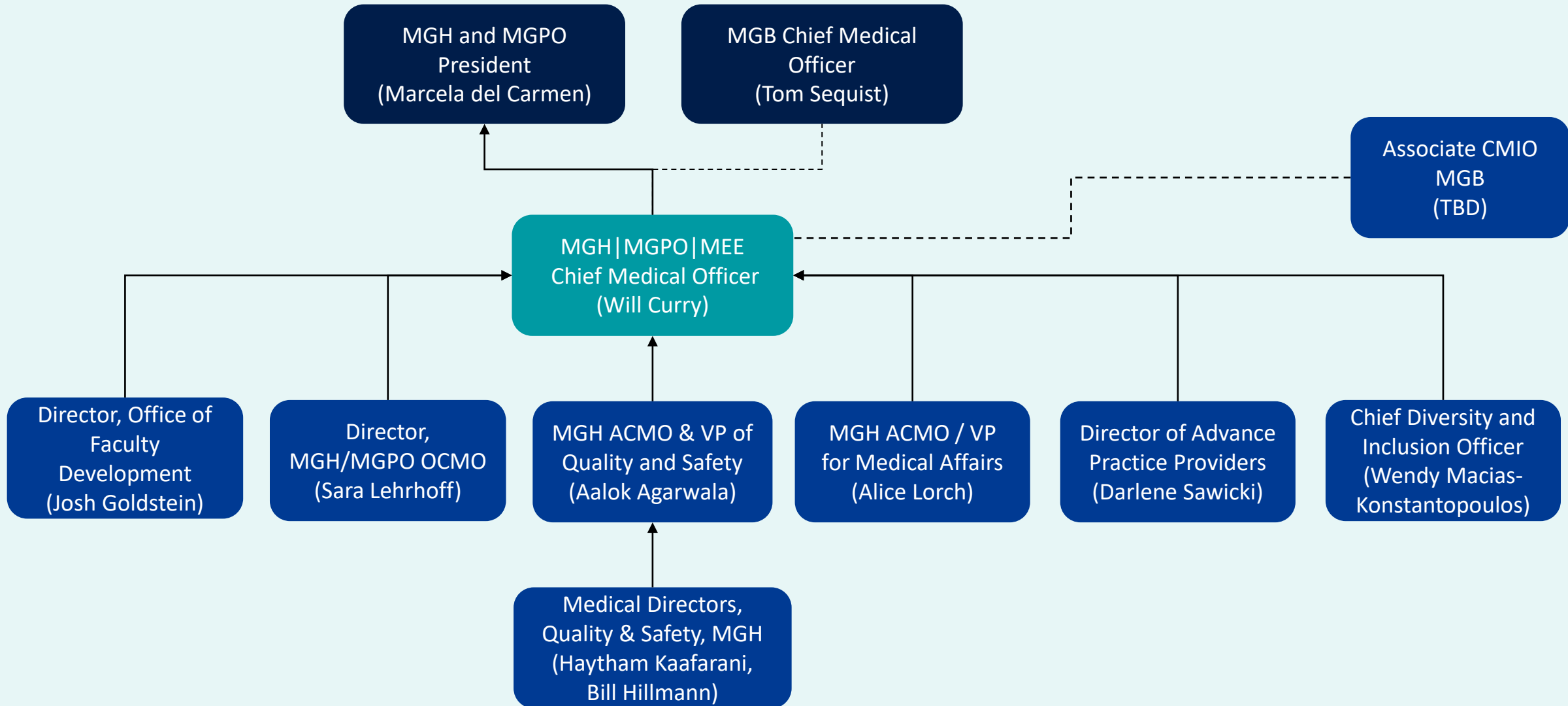
Mass General Brigham

Welcome to Mass General Hospital

New Faculty Orientation Fall 2024

MGH/MEE Hospital OCMO Org Structure

MGH/MEE Leadership



MGPO Frigoletto Committee on Physician Well-Being

Frigoletto Committee Charter



The Frigoletto Committee was chartered by the MGPO to identify, evaluate, prioritize and offer suggestions to the MGPO Executive Committee for immediate and longer-term remediation of the administrative burden and other factors contributing to physician burnout within the MGPO.



The goal of this work is the restoration of meaning and joy in the practice of medicine at the institutional, practice and physician levels, including the career development and individual well-being.

MGPO Well-Being Initiatives

Current Initiatives

Clinician Engagement

- **Building Communities and Connections Program**
- **CMO Lunches**
- Faculty Receptions
- **MGPO Commons Lunches**
- Women Surgeon Connectivity Program
- Well-Being Summit

Well-Being

- **Career Reflection Interviews**
- **Listening Sessions**
- **MGPO Physician Coaching**
- **MGPO Lactation Support Program**
- **Parental Wellness Program**
- Valor Coaching





Mass General Brigham

Four Pillars

- Patient Care
- Research
- Teaching
- Community





Mass General Brigham

Four Pillars

- Patient Care
- Research
- Teaching
- Community

Learning Laboratory

Recognizing the importance of routine "deliberate practice," the Learning Lab at Massachusetts General Hospital serves as an institutional resource to support simulation-based training and research to improve critical health care skills.



Mass General Hospital researcher honored with 2024 Nobel Prize

Gary Ruvkun, PhD, has been awarded the 2024 Nobel Prize in Physiology or Medicine for his role in the discovery of microRNA and its impact of post-transcriptional gene regulation.



Mass General Brigham, La Colaborativa Launch Community Health Initiative



FY '25 System Goals

In service of our patients, our people, our science, and our future, our FY25 systemwide goals will focus on...



Integration

Elevate the quality and accessibility of care we deliver and reinforce our national preeminence in research, innovation, and education by integrating clinical departments and launching multi-disciplinary institutes



People

Become the employer of choice by cultivating an exceptional employee experience and creating a positive work environment grounded in equity, inclusion, and respect



Quality

Establish Mass General Brigham as the country's leading health system for quality by becoming a high reliability organization informed by data and focused on safety and equity



Research

Broaden the reach and impact of our worldrenowned research organization by strengthening our research infrastructure, amplifying support for breakthrough discoveries, and promoting collaboration across the system





Financial Sustainability

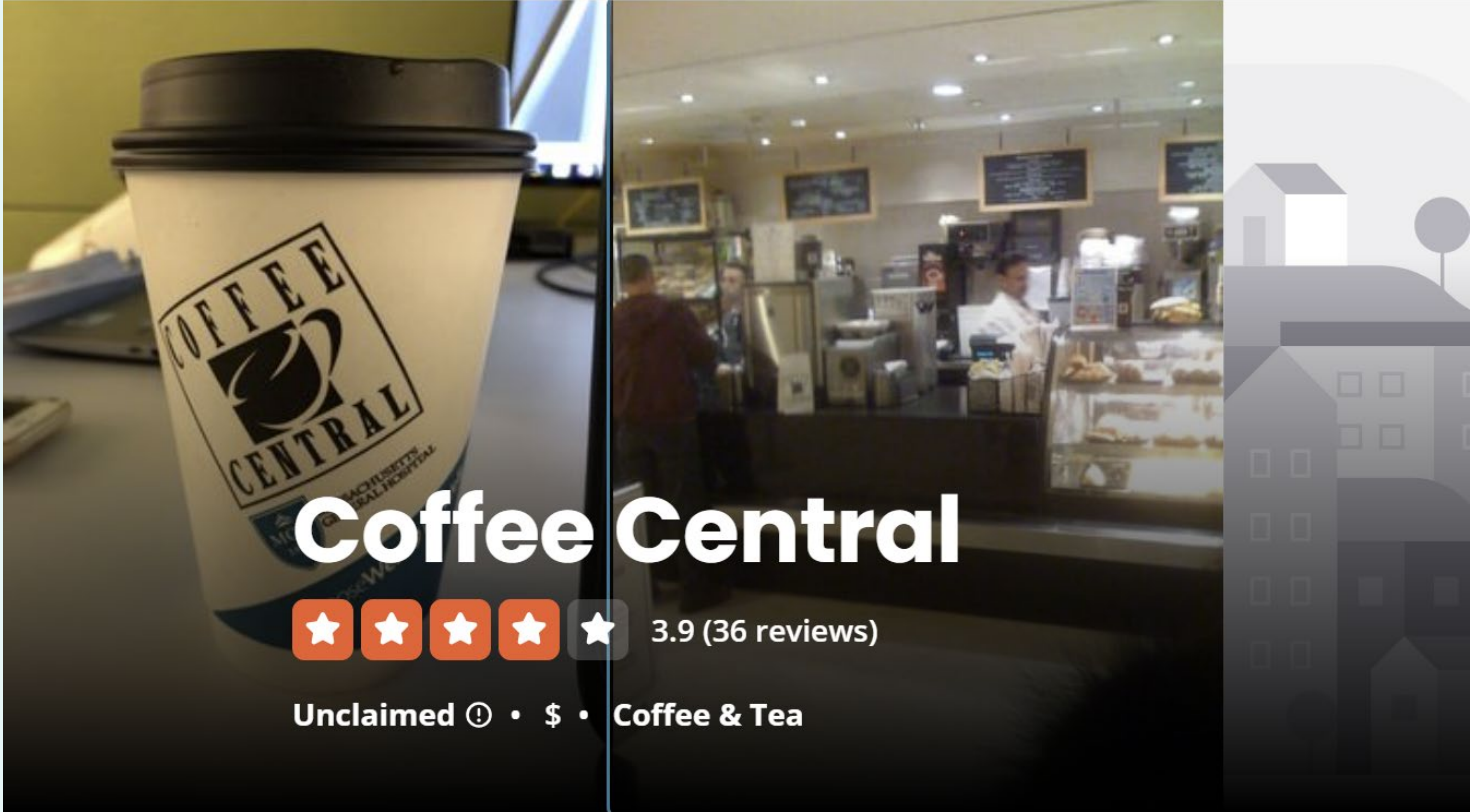
Secure the future of our four-part mission – patient care, research and discovery, education, and community health – by achieving sustainable financial performance and enabling continued investments






yelp  Coffee & Tea | Boston, MA 02108 

Restaurants ▾ Home Services ▾ Auto Services ▾ More ▾



Coffee Central

 3.9 (36 reviews)

Unclaimed ⓘ • \$ • Coffee & Tea





Mass General Brigham

Welcome to Mass General Hospital

New Faculty Orientation Fall 2024