



# Teaching and Education at Massachusetts General Hospital

James A. Gordon, MD, MPA

Vice President of Education and Chief Learning Officer  
David F.M. Brown, MD Endowed Education Academy Chair  
Director, MGH Learning Laboratory  
**Massachusetts General Hospital**

Professor of Emergency Medicine and Medicine  
**Harvard Medical School**



# Re-Imagining the Ether Dome

## Education in the Service of All Missions

A care team alleviating suffering with the newest advances,  
under the watchful eye of a community of learners.

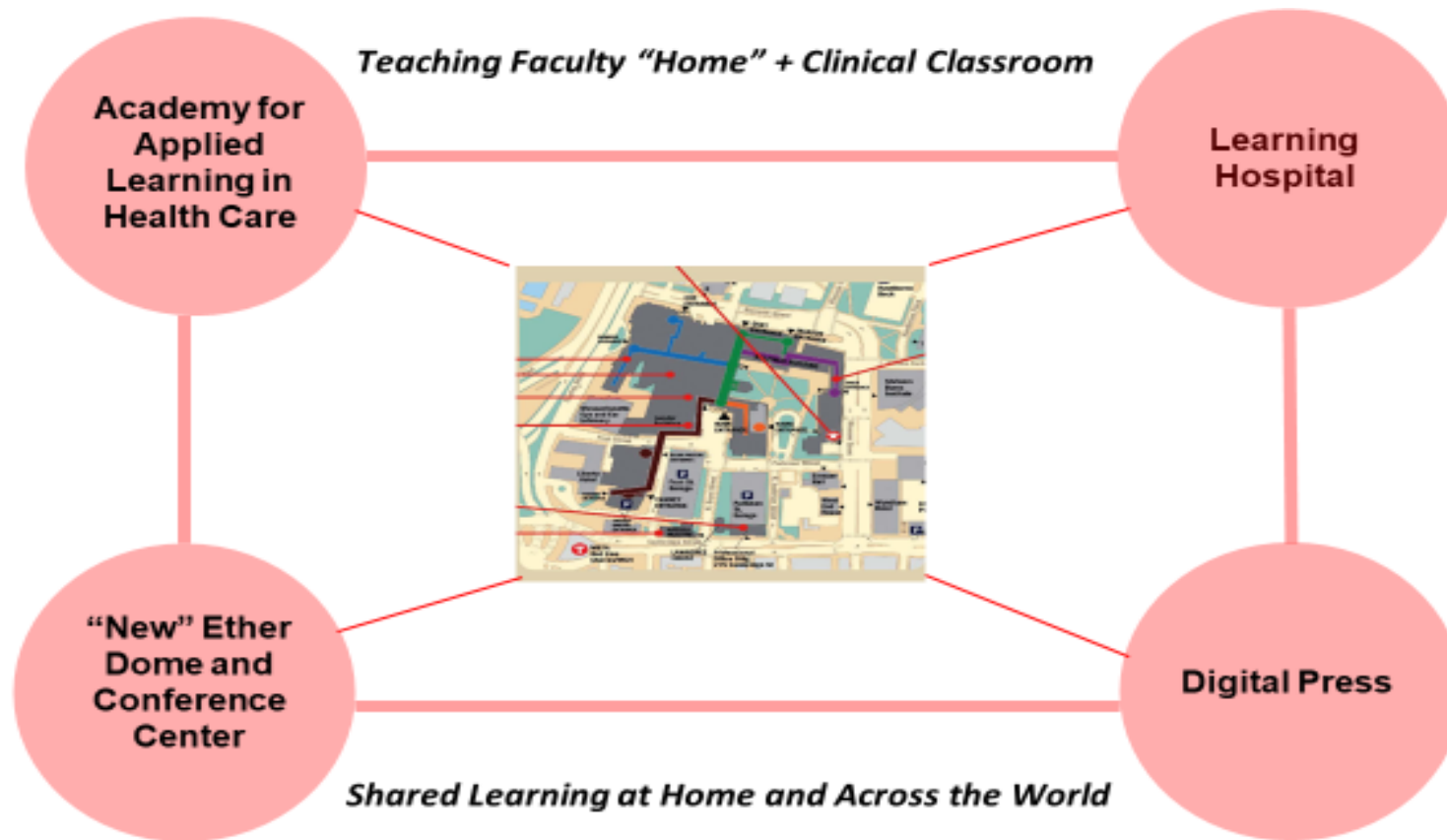


**Better Education = Better Health Care**



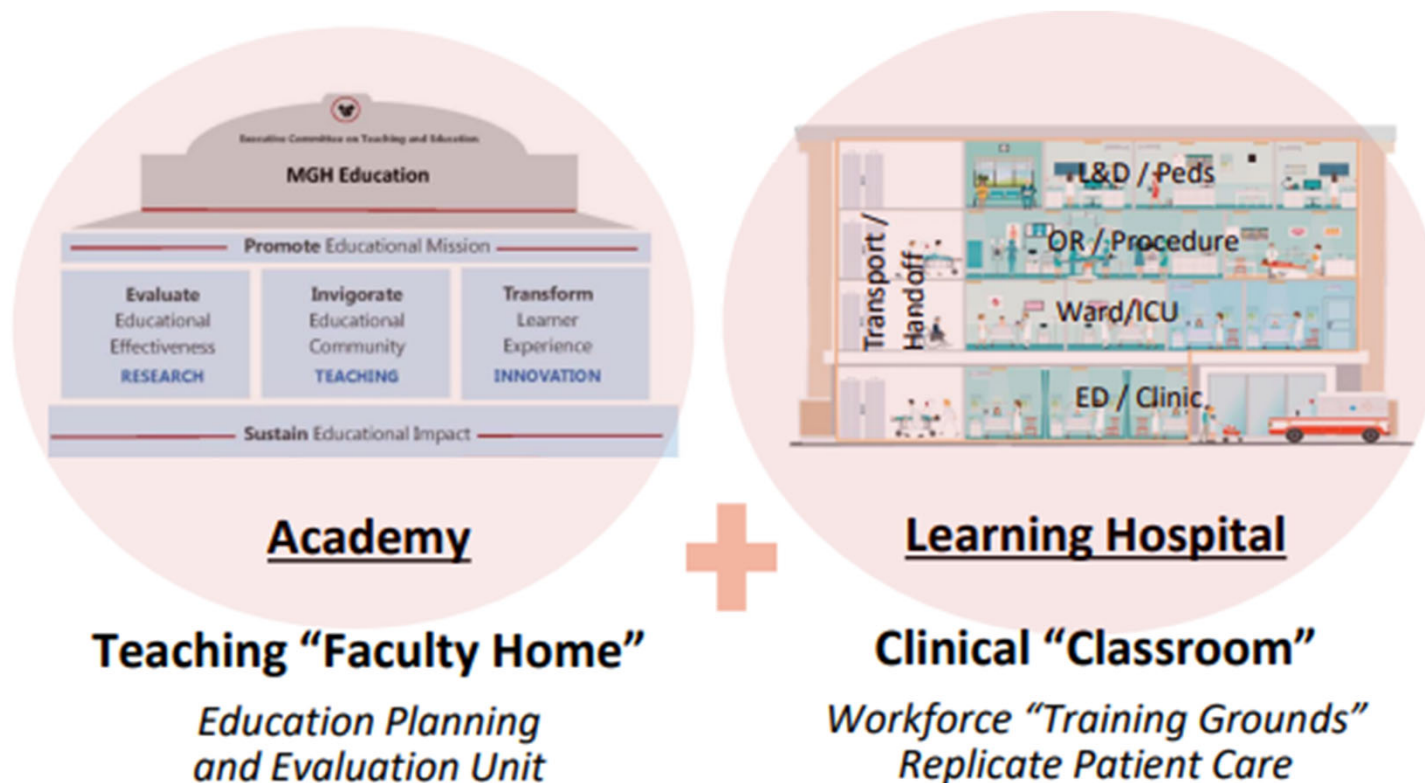
# MGH Education

## Building Shared Infrastructure



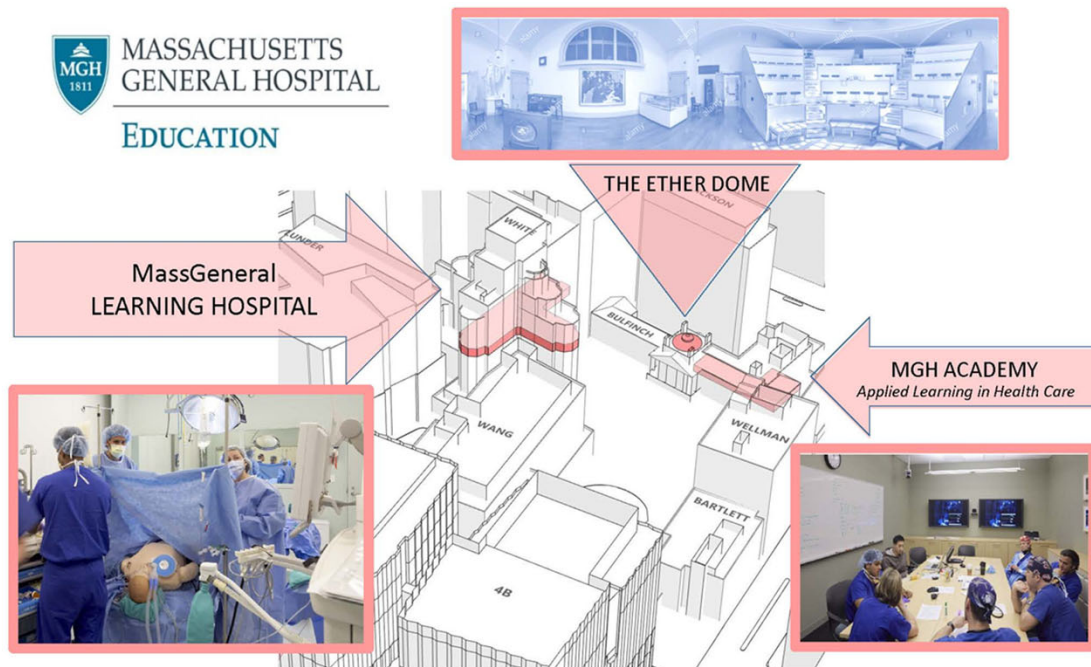
# MGH Education Strategy: Integration + Scale

- **TEAMS: Interprofessional Education across HOSPITAL UNITS**
- **TRAINING—Routine PRACTICE for EXPERT Performance**



# Campus of the Future

## A Teaching Hospital for the 21<sup>st</sup> Century



***Creating new models for education to improve patient care***



# Campus of the Future

## Lunder Learning Initiative



**Mass General Slavin Academy**

## Learning Lab → Lunder Learning Hospital



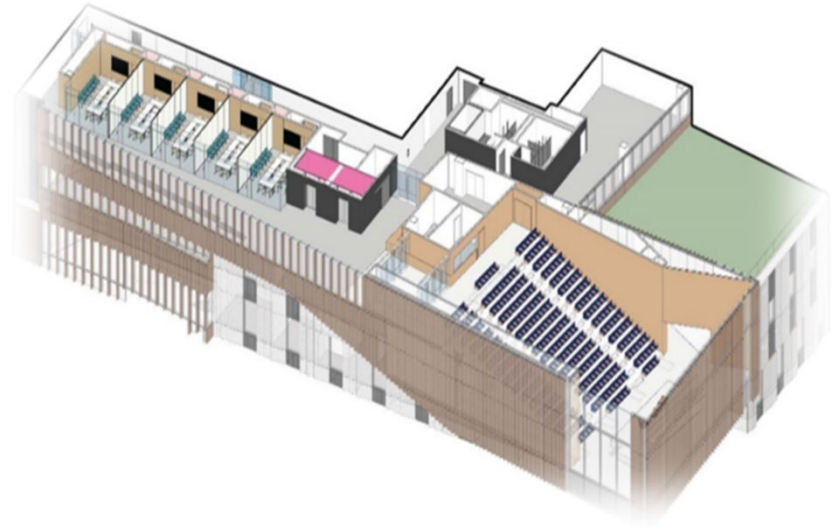
**Learning Endowment:  
Education Chairs Initiative**



# Campus of the Future Campaign for Mass General



**“New” Ether Dome and  
Conferencing Center**



**Learning Endowment:  
Education Chairs Initiative**



# Peter L. Slavin, MD Academy for Applied Learning in Health Care

## Mass General Slavin Academy: Committees/Leadership

### Teaching & Training

Co-Chairs: Alberto Puig, MD, PhD  
Marie Borgella, RN, DNP



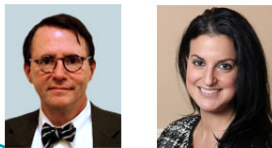
### Learning Innovation

Co-Chairs: Jim Gordon, MD, MPA  
Colleen Snyderman, PhD, RN



### Education Resources & Community Affairs

Co-Chairs: John Herman, MD  
Labrini Nelligan, MS



### Education Scholarship

Co-Chairs: Emil Petrusa, PhD (through 6/30/24)  
New: Director of Health Professions Education Research



Director,  
Health  
Professions  
Education  
Research



- Education Research Scholar Grant Program
- Teaching Scholar Grant Program (course tuition)
- Health Professions Education Research Prize
- One-on-One Research Consultations
- Education Research Seminar Series
- Investigator Forums



14





# Slavin Academy Opening: Sept 10-12, 2024



The MGH Learning Laboratory seeks to ensure that every MGH trainee, provider, and team has regular opportunities for dedicated clinical practice and feedback in a risk-free environment.

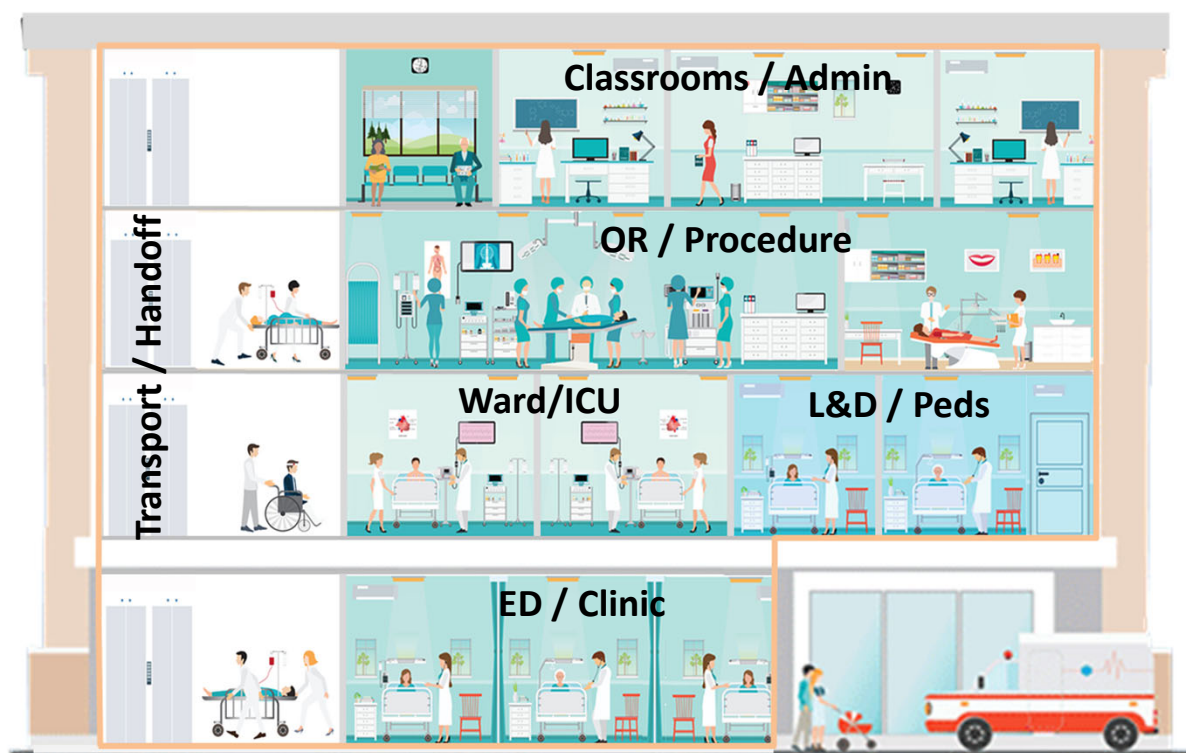
**Mission:** To enhance patient safety through routine practice for expert performance



**Vision:** To fully integrate clinical simulation as a quality and safety tool in healthcare



# Planning for the Learning Hospital



## Classroom/ Admin Core

4 core clinical  
units/care sites:

1. ED-clinic
2. Ward-ICU
3. L&D/peds
4. OR/procedure

Requiring 4  
clinical/learner  
teams (10-20  
individuals) to staff  
per shift (2 hrs)

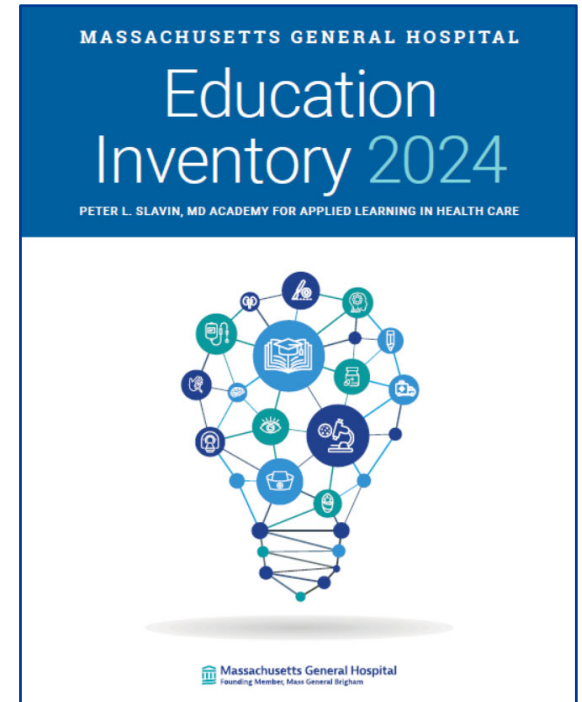
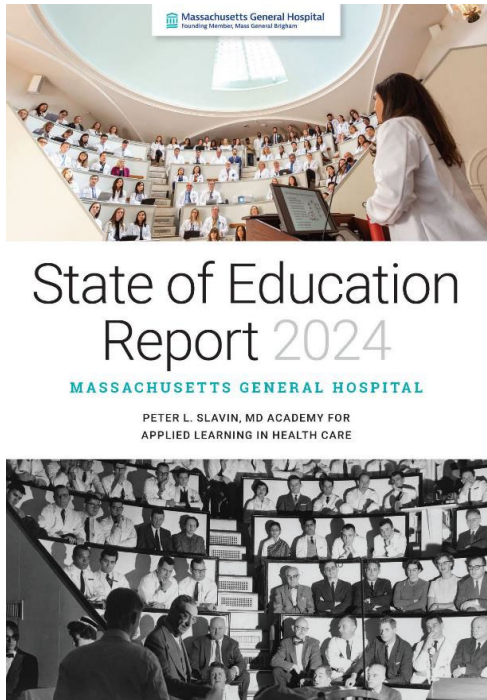
Simultaneous cases  
(including transfer/  
hand-off) between  
units

Oversight-  
debriefing by  
expert instructors

- Replicate patient care from initial contact to discharge, across a care units
- Multiple units and teams functioning together and in parallel with hand offs
- Expert debriefing of training exercises linked to quality, safety, and efficiency goals



# State of Education Report: MGH Hospital Goal FY24



Questions?

