



Mass General Brigham

Mass General Research Institute

# Research at MGH

Mary L. Bouxsein, PhD; Director, Office for Research Careers  
[mbouxsein@mgb.org](mailto:mbouxsein@mgb.org)

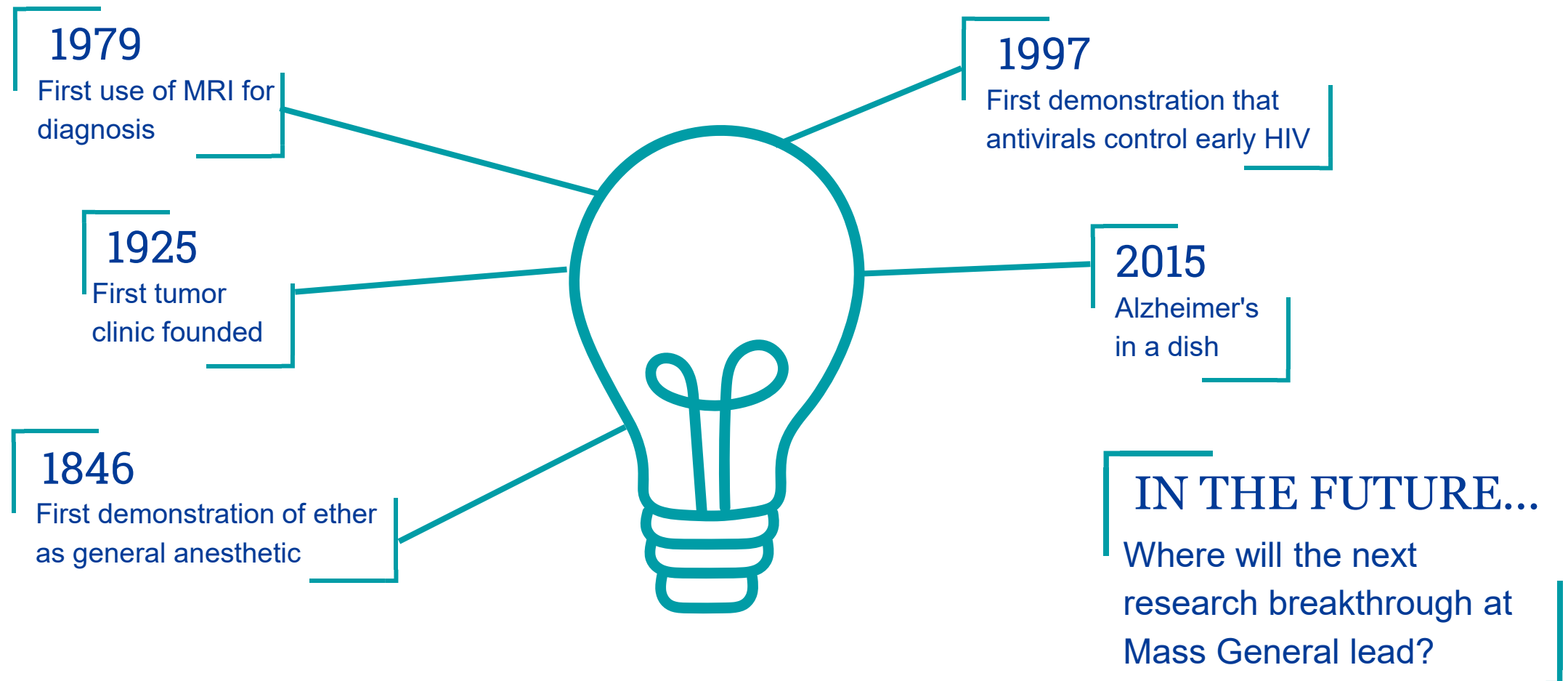


HARVARD MEDICAL SCHOOL  
TEACHING HOSPITAL

# Mass General Research Institute (MGRI)

## *Transforming Medicine Through Innovation*

Research at MGH began over 200 years ago. Today, the MGRI is home to the largest hospital-based research program in the United States.



# The MGH Research Community

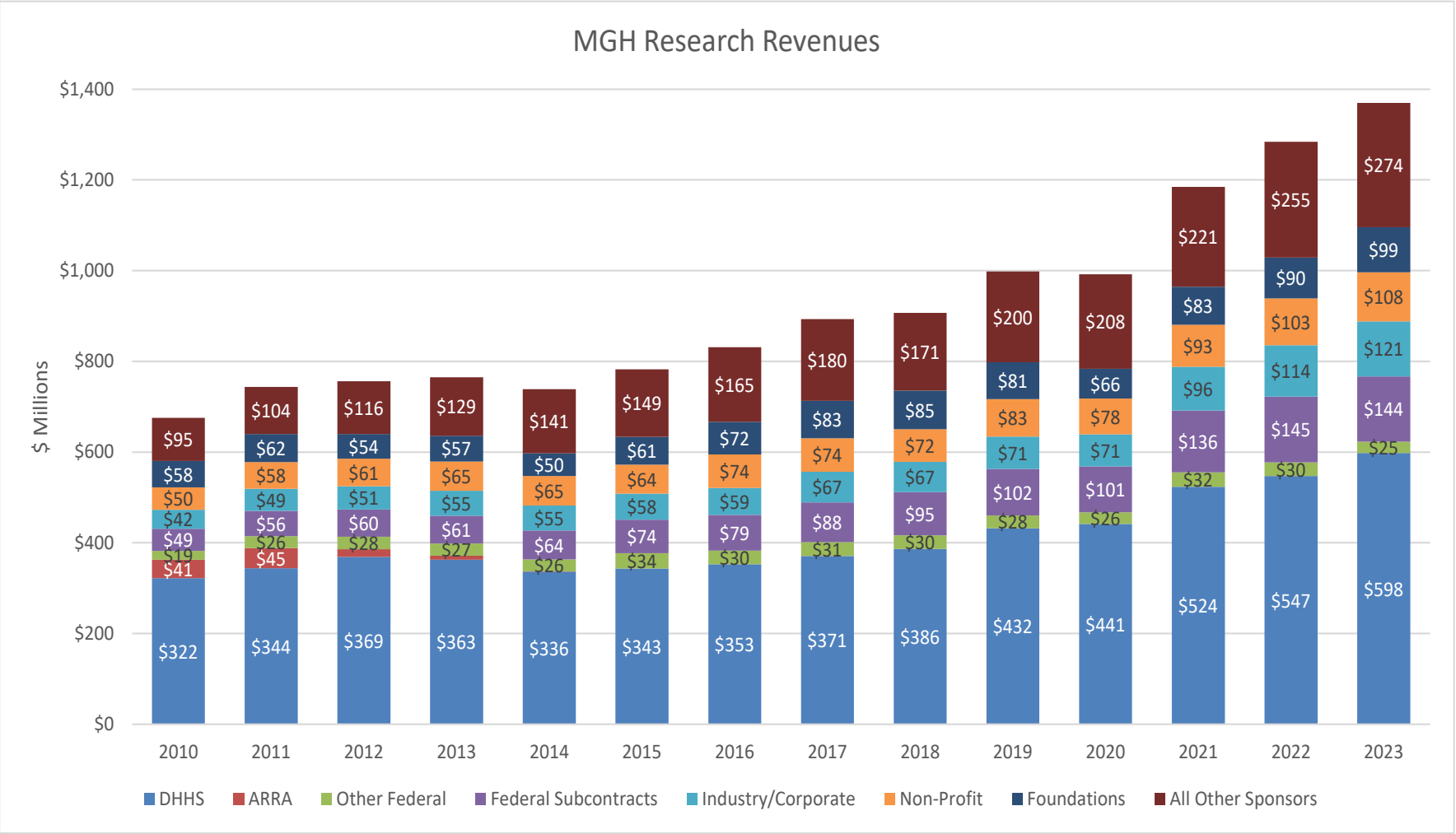
*United by research, driven by hope*

- A community of 10,000 people working every day to improve health
  - 2,000 principal investigators
  - 4,000 scientists and research staff
  - > 1,500 research fellows / postdocs
  - 800 graduate students
  - 1/3 of MGH clinicians are research PI's
  - 1,200 research administrative support staff
- > 30 Departments, Centers and Institutes
- Annual research revenue/spending of \$1.3 billion
- Over 1.3 M square feet of research space
- FY22: >1,250 patents filed, > \$75M royalty/license income
- >2,000 active clinical trials ongoing
- >500 journal publications per month



# MGH Research Revenue Trends

Total MGH research revenues of \$1.37B in 2023



Source: MGB Research Revenues FY10- FY22 Actual. Note: Research Activity, includes Other Science and excludes P&L adjustments .





# Mass General Grants and Success Rate

<b>Sponsor Type</b>	<b># of Proposals Submitted</b>	<b># of Proposals Awarded</b>	<b>Success Rate</b>
DHHS	1446	412	28%
Foundations	528	162	31%
Industry/Corporate	429	304	71%
Non-Profit	911	410	45%





# Faculty Support

On average, Executive Committee on Research (ECOR) awards >\$10 M to >100 investigators annually

Grant	Avg \$	Avg # PIs
<b>Interim Support Funds (ISF)</b> (Formulaic/Deliberative)	<b>\$4.7M</b>	<b>63</b>
<b>FMD &amp; Tosteson Fellowships</b> (Postdoctoral Awards)	<b>\$1.5M</b>	<b>21</b>
<b>ECOR Awards &amp; Prizes</b>	<b>\$1.9M</b>	<b>26</b>
<b>MGH Research Scholars</b>	<b>\$3M</b>	<b>6</b>



# Division of Clinical Research (DCR)

Judy Hung, MD  
Director



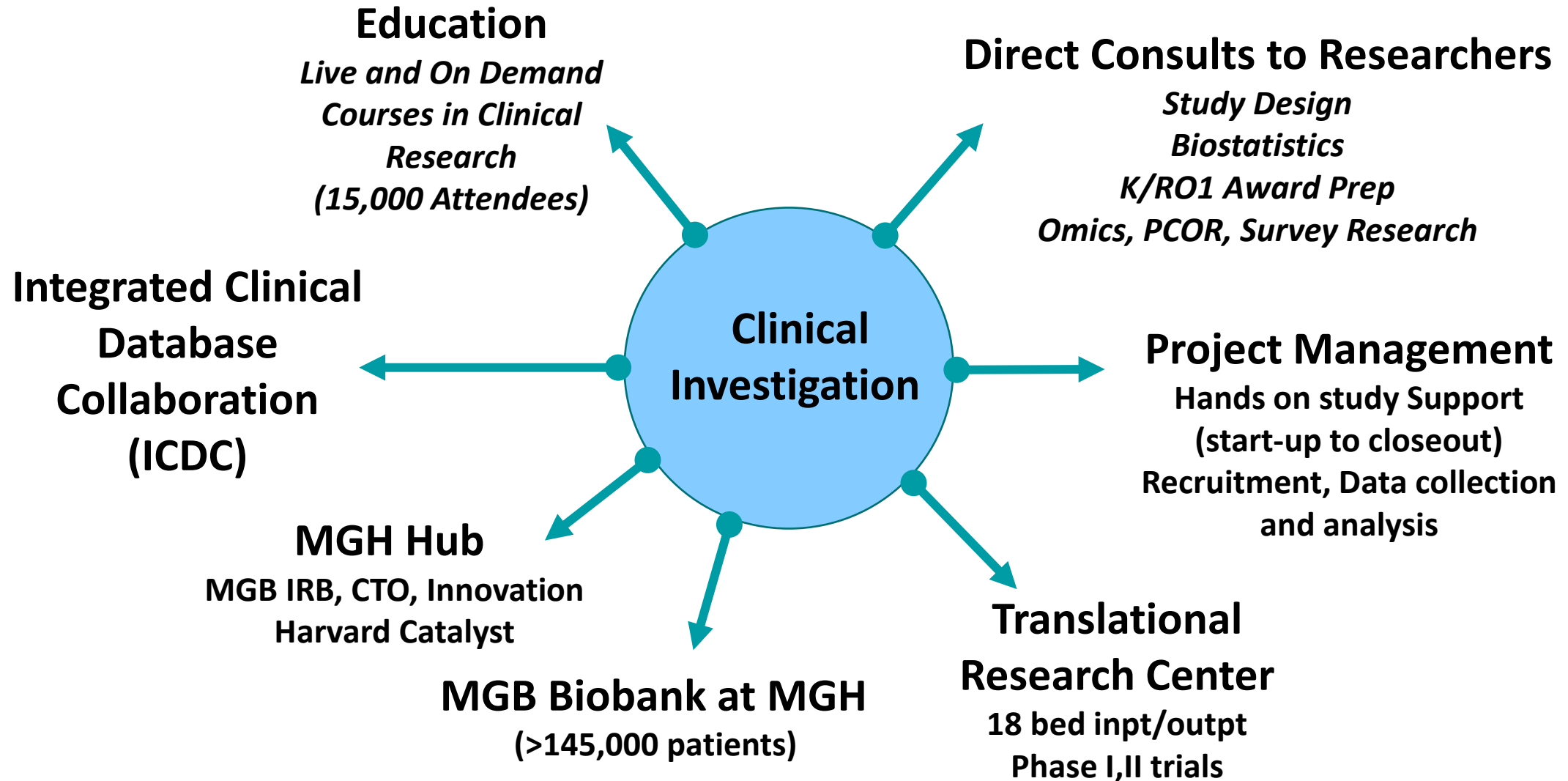
## Mission

Increase quantity, quality, & efficiency of translating science advances into improved patient care



# Division of Clinical Research

## Promoting and Supporting Clinical Research



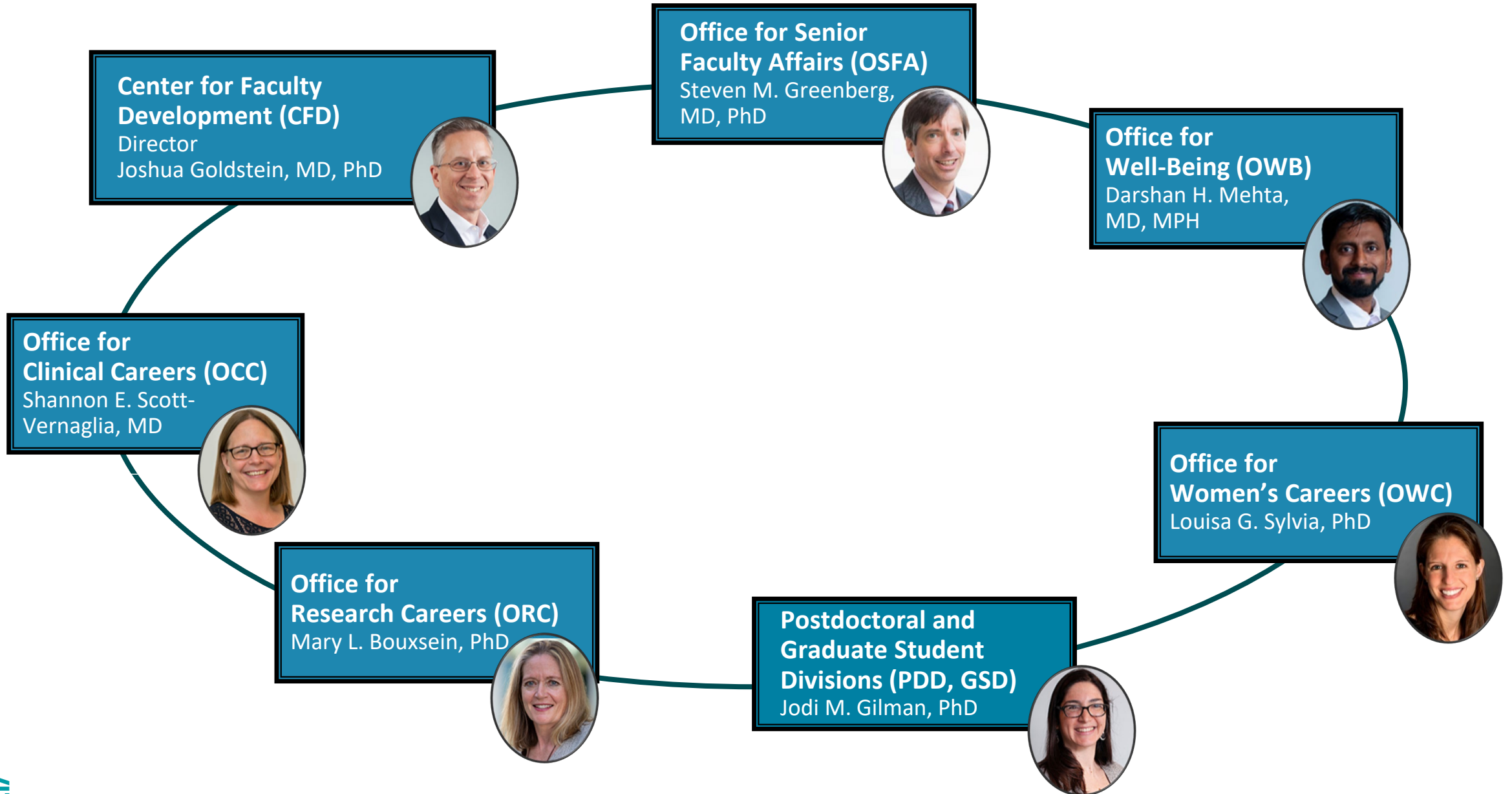


# Office for Research Careers

## Mission:

The ORC facilitates the career advancement of research faculty and trainees through career development seminars & workshops, 1:1 counseling, and promoting policies to advance the research workforce.





# CFD + MGRI Activities



Leadership Skills Development



Mentorship training  
Peer mentoring



Post-doc Retreat



Grant Writing Workshops  
Writing Support



Career Consultations  
CV + Promotions



Science Slam !





# Where to find information:

# MGRI Intranet

[mghresearch.partners.org](http://mghresearch.partners.org)

researchintranet.mgh.harvard.edu

Home | Microsoft 365

Mass General Research Institute Intranet – For all your research needs

MGH Internet MGB Internet Vitals MGB Research Hub

Mass General Brigham  
Mass General Research Institute

Search Google

ENHANCED BY Google

Search the Research Intranet

Organization | Committee & Meetings | Research Support | Hospital Support | Resources | Grants & Administration | News & Events

HELP & HOW TO

RESOURCE GUIDE

IT HELP DESK

HELPFUL PHONE NUMBERS

**Committees & Administration**

- Center for Comparative Medicine (CCM)
- Center for Faculty Development (CFD)
- Committee on Fundamental Research (CFR)
- Institutional Animal Care and Use Committee (IACUC)
- Research Building Management
- Institutional Review Board (IRB)
- Division of Clinical Research (DCR)
- Office of the Scientific Director (OSD)
- Executive Committee on Research (ECOR)
- Research Compliance
- Research Space Management
- Research Safety

**MGB Research Hub**

[LEARN MORE >](#)

For immediate assistance, contact the Research Administrator on Call: 617-726-HOW2 (4692)

**Quick Links**

- Find a Researcher
- Insight
- ISuggest
- Lab Archives
- Outlook Email
- UKG
- Clinical Trials Office
- Ask My HR
- ILog
- Other Tools
- PeopleSoft
- Phone Directory
- Research Navigator
- REDCap
- Supply Chain
- Postdoctoral Fellow Information
- BioLift
- Safety Incident Reporting App
- MGRI Branding



# How to stay informed about what is happening

- Monthly **research council** meetings
- Weekly email from **MGRI** “Research News”
- Email / webinars from **Division of Clinical Research**
- Email / trainings from **Center for Faculty Development**
- **Social media**



Mass General Brigham  
Mass General Research Institute

### MGH November Research Council

Please join us for Research Council on  
**Monday, November 4, from 12:00 to 1:00 pm.**

While this meeting will be hybrid, we highly encourage you to attend **in person** in the Simches Auditorium (3.110)

Lunch will be available at the Simches Auditorium!

[Add to your calendar](#)

#### Agenda

##### 10-year MGB research strategic plan



**Paul Anderson, MD, PhD, MGB CAO**

Following a year of intensive development and significant feedback from the research community, Paul Anderson, MD, PhD - MGB Chief Academic Officer will present the MGB Research Strategic Plan. You can learn more about the development process [here](#). Have feedback or questions? Submit anonymous questions below!



Mass General Research Institute  
7,040 Tweets



**Mass General Research Institute**  
@MGH\_RI Follows you

Where science and medicine converge to improve patient care, treat disease and reduce healthcare costs—at Mass General and across the globe.  
[mgri.bwh.harvard.edu](http://mgri.bwh.harvard.edu)

• Boston, MA • [massgeneral.org/research](https://massgeneral.org/research) • Joined January 2015

2,540 Following 7,468 Followers

Followed by MGH Division of Pulmonary & Critical Care Medicine, Lacey Robinson MD MPH, and 442 others you follow

Tweets Tweets & replies Media Likes

Retweeted

**Mass General Research Institute** @MGH\_RI · Sep 10

Only 2 weeks left to enter the 2021 MGRI Image Awards! We've received great images so far and can't wait to share them with you! If you want to join in on the fun learn more at: [massgeneral.org/2021-image-awards](https://massgeneral.org/2021-image-awards)...

@MassGeneralNews @MGH\_Martinos @MGH\_Medicine @mgri\_id @MGH\_Pathology @MGH\_NeuroSci



2021  
MGRI Image Awards

Enter: August 1 - September 31  
Prize: \$10,000 - September 31  
Prize: \$5,000 - October 1 - October 31  
Prize: \$2,500 - November 1 - November 31

Full rules and terms: [https://massgeneral.org/2021-image-awards](#)



Science news and discoveries from the Mass General Research Institute

**BENCH**  **press**

Home About Research Communicating Science Subscribe

## Medicine Changes Lives. Research Changes the World.

Every day, Mass General scientists chart new terrain in biomedical research to prevent and treat human disease and advance patient care — locally and across the globe.





# Things to remember

## **YOU are a member and an important part of the Research Institute!**

The Research Institute was started to support, guide, and promote research at Mass General, and it encompasses all researchers and support staff.

## **The MGH Research Intranet is a great source of information**

**(<https://researchintranet.mgh.harvard.edu>)**

The Intranet quickly connects you to important research resources, including:

- One-click access to Google, Research Navigator, Insight, PeopleSoft
- A help and how-to page with over 60 topics
- A comprehensive research resource guide
- The on-call number to speak with a senior research administrator at any time: 617-726-HOW2 (4692)

## **The Executive Committee on Research (ECOR) website is a resource for internal grants and awards. (<http://ecor.mgh.harvard.edu>)**

See internal funding opportunities (faculty awards, interim support grants, postdoctoral awards and external award nominations)



Mass General Brigham

Mass General Research Institute

# Welcome to The Mass General Research Institute!

# Research Compliance

MGH is committed to a culture of compliance by complying with all applicable federal, state, and local laws and regulations. Essential to its success is the adherence to the highest ethical standards to promote, support, and guide research at the hospital.

The Office of Research Compliance supports the research community by providing

- Interpretation of regulation, policy, and compliance questions,
- education and training,
- assessments and audits, and
- guidance on research issues.

We support all areas of research and look forward to partnering with you to create, promote, and sustain a culture of compliance in which MGH continues to be a leader and example.

## Resources

Kelé Piper, Director, MGH Research Compliance

[kkpiper@mgh.harvard.edu/617-726-2111](mailto:kkpiper@mgh.harvard.edu/617-726-2111)

## Research Compliance Webpage

<https://researchintranet.mgh.harvard.edu/research-compliance/>







# Research Misconduct

- Research Misconduct Definition
- Regulatory Driven Process
- Increase in Number of Cases (Pub Peer, Clare Francis)
- Lab Archives/Recordkeeping
- Zero Tolerance

If you encounter research misconduct, immediately contact Bob Kingston, Chief Academic Officer & Sr. VP for Research, Research Integrity Officer at [Kingston@MOLBIO.MGH.HARVARD.EDU](mailto:Kingston@MOLBIO.MGH.HARVARD.EDU) or Kelé Piper, Director of Research Compliance, [kkpiper@mgh.harvard.edu](mailto:kkpiper@mgh.harvard.edu).

Anyone who comes forward with a research misconduct allegation in good faith – the Complainant – is considered a whistleblower. MGB is required by federal regulation to protect, and is committed to protecting, individuals against retaliation who bring an allegation to the attention of hospital leadership.